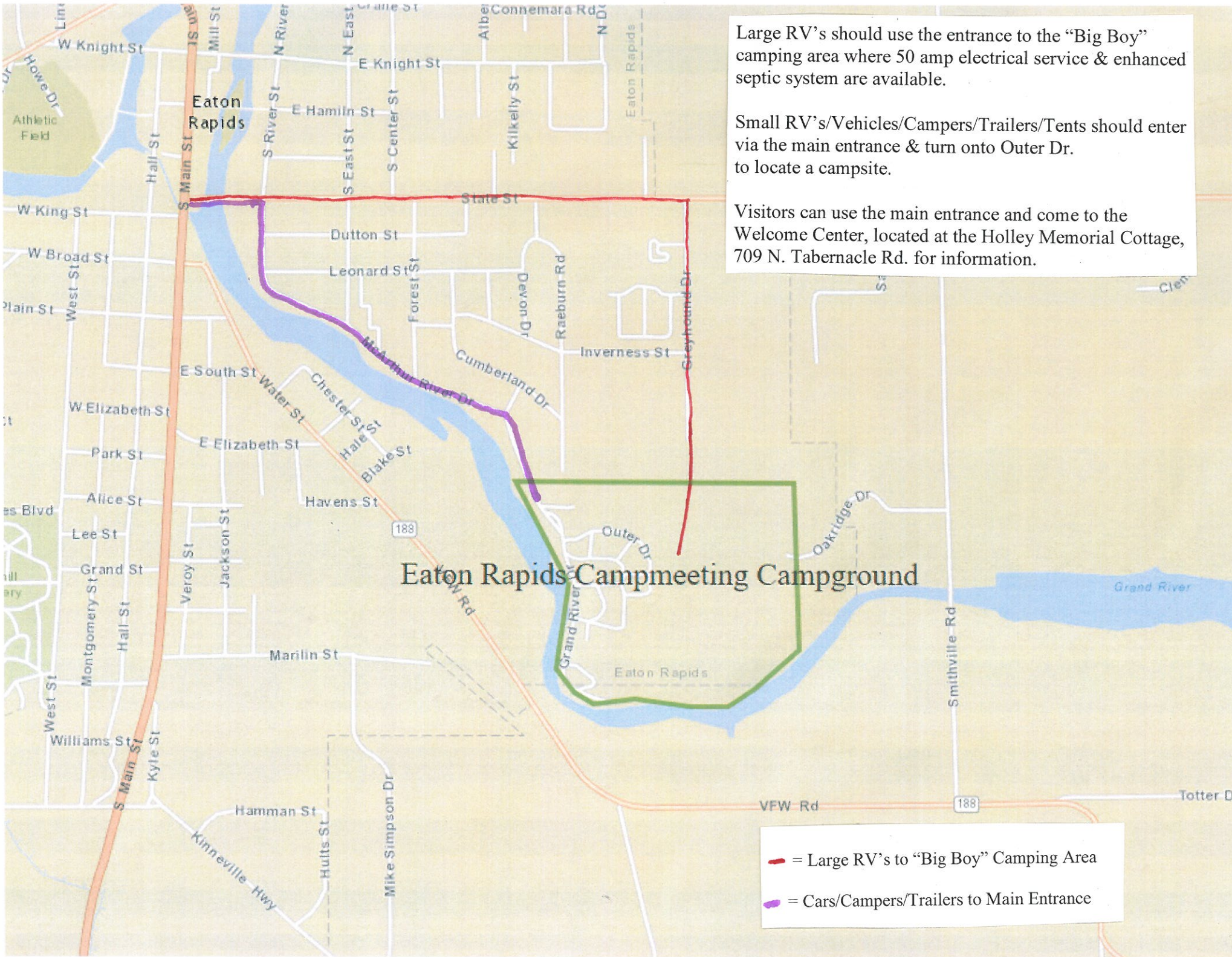




Large RV's should use the entrance to the "Big Boy" camping area where 50 amp electrical service & enhanced septic system are available.

Small RV's/Vehicles/Campers/Trailers/Tents should enter via the main entrance & turn onto Outer Dr. to locate a campsite.

Visitors can use the main entrance and come to the Welcome Center, located at the Holley Memorial Cottage, 709 N. Tabernacle Rd. for information.



Eaton Rapids Campmeeting Campground

-  = Large RV's to "Big Boy" Camping Area
-  = Cars/Campers/Trailers to Main Entrance